

### Monthly Operations Report for August 2025 at KLCU

#### Operations

	Aug 2025	Aug 2024	Year over Year Change
TRANSITION	92	0	-
TOUCH & GO	238	0	-
TAKEOFF	503	0	-
LANDING	497	0	-
GO AROUND	38	0	-
FLYOVER	11	0	-
<b>Totals</b>	<b>1552</b>	<b>0</b>	<b>-</b>

**NOTE:** FLYOVER and TRANSITION are excluded from the total operations count.  
Operations classified as TOUCH & GO and GO AROUND are counted as two distinct operations, a landing and a takeoff respectively.

#### Aircraft Type

	Aug 2025	Aug 2024	Year over Year Change
Rotorcraft	1	0	-
Fixed wing single engine	1444	0	-
Fixed wing multi engine	64	0	-
Unknown	43	0	-

#### Engine Type

Turbo-shaft	1	0	-
Turbo-prop	56	0	-
Turbo-fan	3	0	-
Reciprocating	1368	0	-
4 Cycle	81	0	-
Unknown	43	0	-

#### Number of Engines

1	1445	0	-
2	64	0	-
Unknown	43	0	-

#### Average Daily Operations

Monday	51	0	-
Tuesday	39	0	-
Wednesday	46	0	-
Thursday	39	0	-
Friday	39	0	-

Saturday	74	0	-
----------	----	---	---



Monthly Operations Report for August 2025 at KLK			U
Operations			
	Aug 2025	Aug 2024	Year over Year Change
Sunday	58	0	-
Average per weekday	43	0	-
Average per weekend	66	0	-
Local vs. Transient			
Local	0	0	0.0%
Transient	1552	0	0.0%
Nights Stayed	141	0	-
Seats on Overnight Aircraft	748	0	-
Overnight Visitors @ 50%	374	0	0.0%
Runways			
RWY 09 GO AROUNDs	42	0	-
RWY 09 LANDINGS	314	0	-
RWY 09 TAKEOFFs	314	0	-
RWY 09 TOUCH & GOs	298	0	-
<b>RWY 09 Total</b>	<b>968</b>	<b>0</b>	-
RWY 27 GO AROUNDs	34	0	-
RWY 27 LANDINGS	178	0	-
RWY 27 TAKEOFFs	184	0	-
RWY 27 TOUCH & GOs	144	0	-
<b>RWY 27 Total</b>	<b>540</b>	<b>0</b>	-

Monthly Operations Report for August 2025 at KLK			U
	Jan 2024	Jan 2023	Year over Year Change
Weight Class			
CLASS 1	1477	0	-
CLASS 2	32	0	-
Unknown	43	0	-
Jet Traffic			
Operations	3	0	-
Taking off Rwy 09	0	0	-
Landing Rwy 09	1	0	-
Taking off Rwy 27	1	0	-

Landing Rwy 27	1	0	-
Monthly Operations Report for August 2025 at KLCU			
	Jan 2024	Jan 2023	Year over Year Change
Largest aircraft	PILATUS AIRCRAFT LTD PC-24 (A-I)		
Average seat count per jet	7	0	-

Most Active Aircraft				
Registration	Manufacturer	Model	Operations	Percentage of Total
N323FS	CESSNA	172P	205	37.1%
N8478U	CESSNA	172F	176	31.8%
N4524Q	GULFSTREAM AMERICAN CORP	AA-5B	89	16.1%
N7497T	CESSNA	172A	52	9.4%
N413PT	CIRRUS DESIGN CORP	SR20	40	7.2%
N23HC	CIRRUS DESIGN CORP	SR22	37	6.7%
N8334N	PIPER	PA-32-301	36	6.5%
N626AD	GEORGE V GOFF	GEORGE GOFF CUBBY	28	5.1%
N60565	CESSNA	150J	22	4.0%
N717CW	LANCAIR COMPANY	LC-40-550FG	22	4.0%

Most Active Owners		
Name	Operations	City
FREDERICKS HALL AVIATION LLC	211	MINERAL
RIG AVIATION LLC	176	TROY
KELLEY AIRCRAFT LLC	72	WEYERS CAVE
LEFFLER GREG L	52	ZION CROSSROADS
AEROBEAR LLC	40	VERO BEACH
GO AVIATION LLC	37	FUQUAY VARINA
N8334N LLC	36	LOUISA
2 SHOTZ LLC	28	ASHLAND
FIRST ECLIPSE LIMITED	22	RICHMOND
AMERICAN FLYING CLUB INC	22	ARLINGTON

Owner Locations		
City	Operations	Percentage of total
MINERAL	200	36.2%
TROY	156	28.2%
Unknown	99	17.9%
LOUISA	49	8.9%
CHARLOTTESVILLE	49	8.9%

### Aircraft Type

Unknown  
Fixed wing multi engine  
Fixed wing single engine  
Rotorcraft



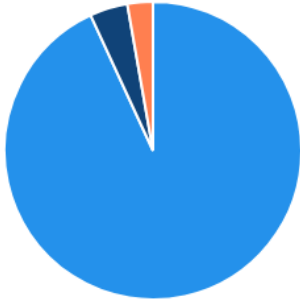
### Engine Type

Unknown  
4 Cycle  
Reciprocating  
Turbo-fan  
Turbo-prop  
Turbo-shaft



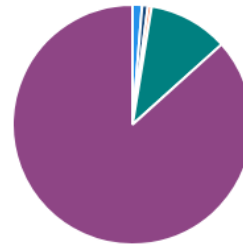
### Number of Engines

1  
2  
Unknown



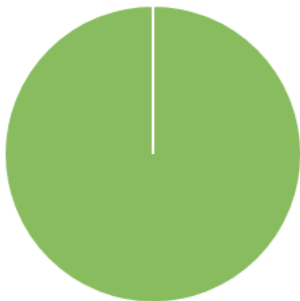
### Weather

Unknown  
IFR  
LIFR  
MVFR  
VFR



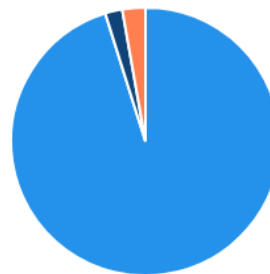
### Local/Transient

Local  
Transient

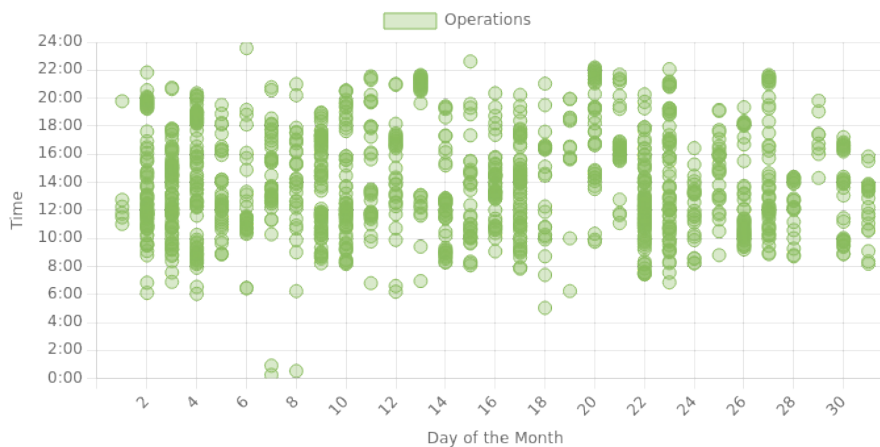


### Weight Class

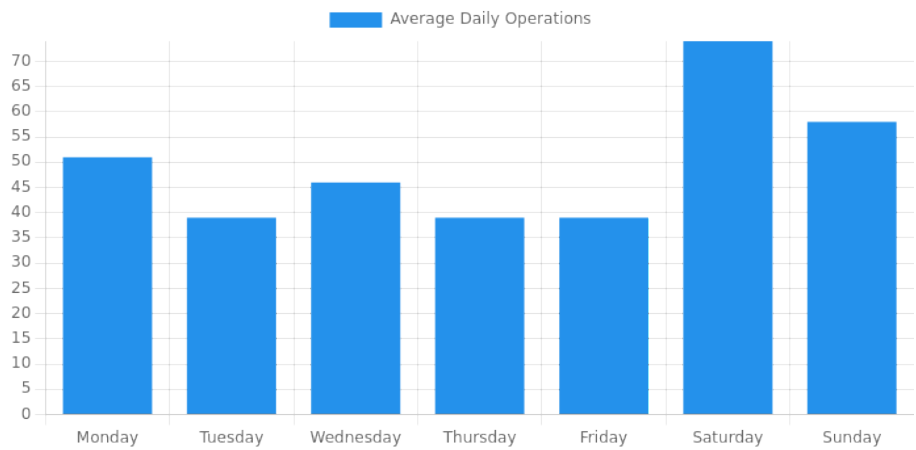
CLASS 1  
CLASS 2  
Unknown



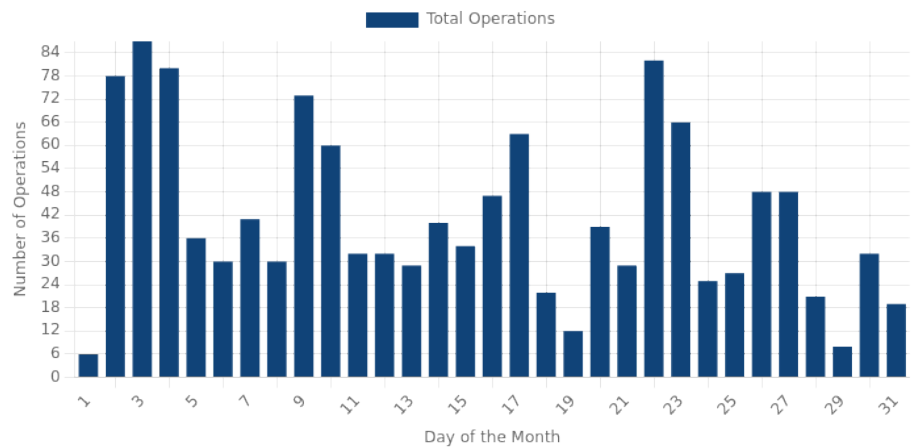
### Time of Day



### Day of the Week



# Daily Operations



Operations by AAC/ADG						
	I	II	III	IV	V	VI
A	1487	0	0	0	0	0
B	20	2	0	0	0	0
C	0	0	0	0	0	0
D	0	0	0	0	0	0
E	0	0	0	0	0	0

# AAC/ADG Distribution

